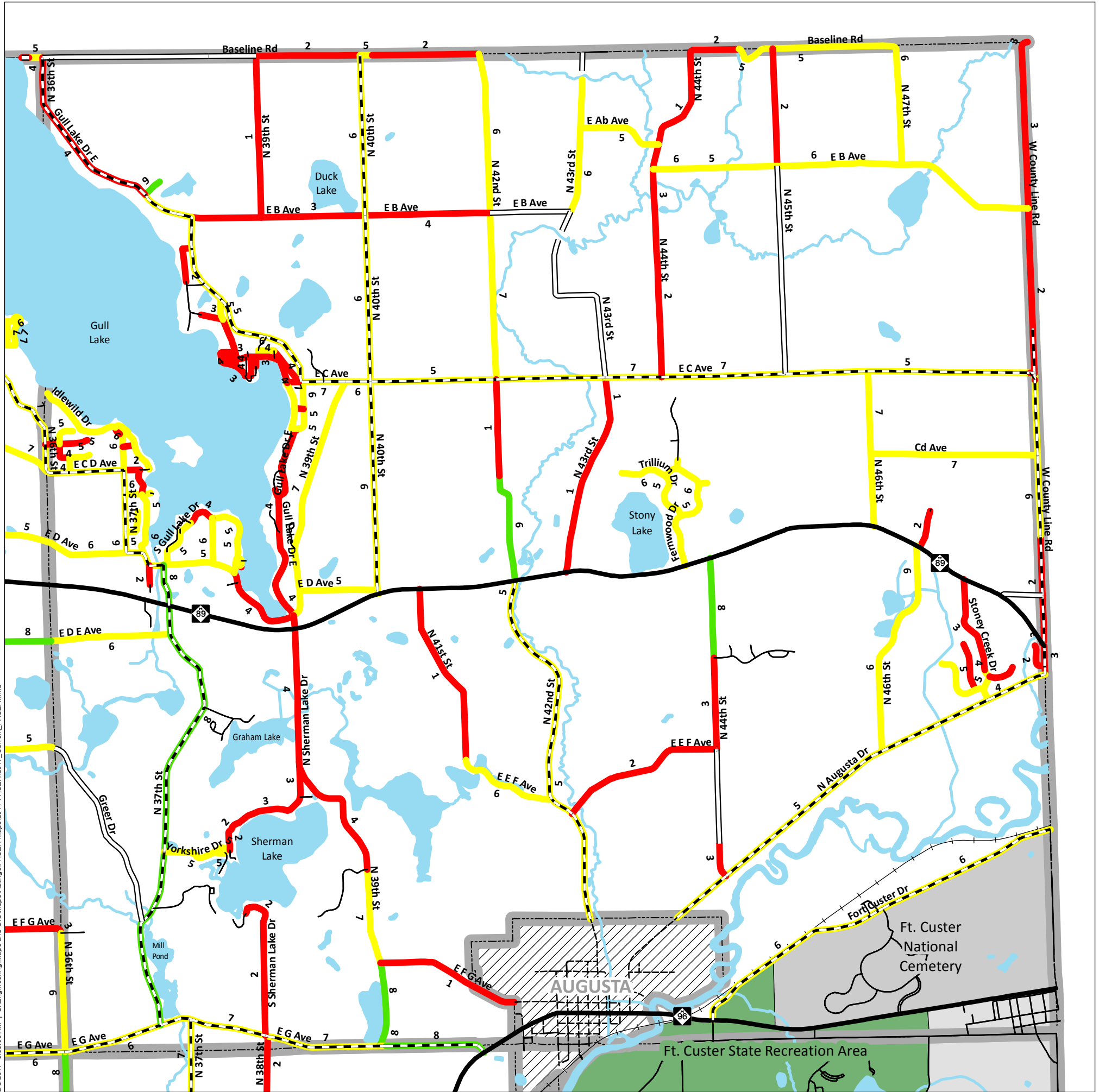


2017 Current Asset Management Ratings Map

Ross Twp



ASSET MANAGEMENT

Asset Management is a systematic approach to selecting the best investment at the right time to maximize the life of the asset being measured, in this case, road surface conditions. The goal is to maintain our roads in good condition, making periodic investments in the pavement, rather than letting it deteriorate to a level that requires a major investment to bring it back to a good condition. Periodic maintenance investments typically total less than the major investment required to rebuild a road.

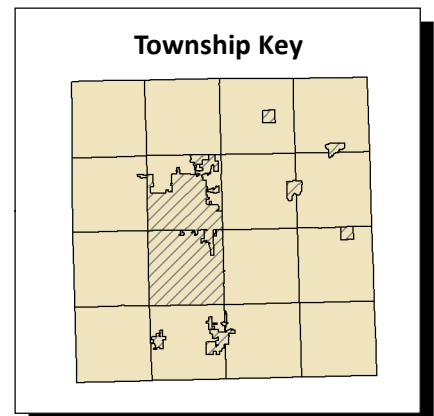
PASER RATINGS

PASER stands for Pavement Surface Evaluation and Rating. The PASER rating scale ranges from 1, failed condition, to 10, brand new pavement. A pavement will only be a 10 the first year of its life, the second year it may automatically become a 9. Any condition of 8 or greater is considered to be a good condition, 7, 6 or 5 are fair, 4 or lower is poor.

- PASER based on 2016 ratings and project improvements.
- Private and Gravel roads not rated.

THE RIGHT FIX AT THE RIGHT TIME

The RCKC determines the best fix to optimize service life for each of our projects. Good pavement management involves less expensive treatments earlier in the life of the pavement in order to take full advantage of infrastructural investments.



Road Classification	Road Ratings	Boundary Designations
State Trunkline	Good (10, 9, 8)	Township/City
County Primary	Fair (7, 6, 5)	City/Village Limits
County Local - Gravel	Poor (4, 3, 2, 1)	Lakes & Rivers
City		
Private		
		Private Roads (Not Rated)



For more information on this, as well as on other topics, please feel free to contact our office or visit our website.

RCKC
Road Commission of Kalamazoo County
3801 E. Kilgore Road
Kalamazoo, MI 49001
(269) 381-3171
Fax (269) 381-1760
www.kalamazoo-countyroads.com