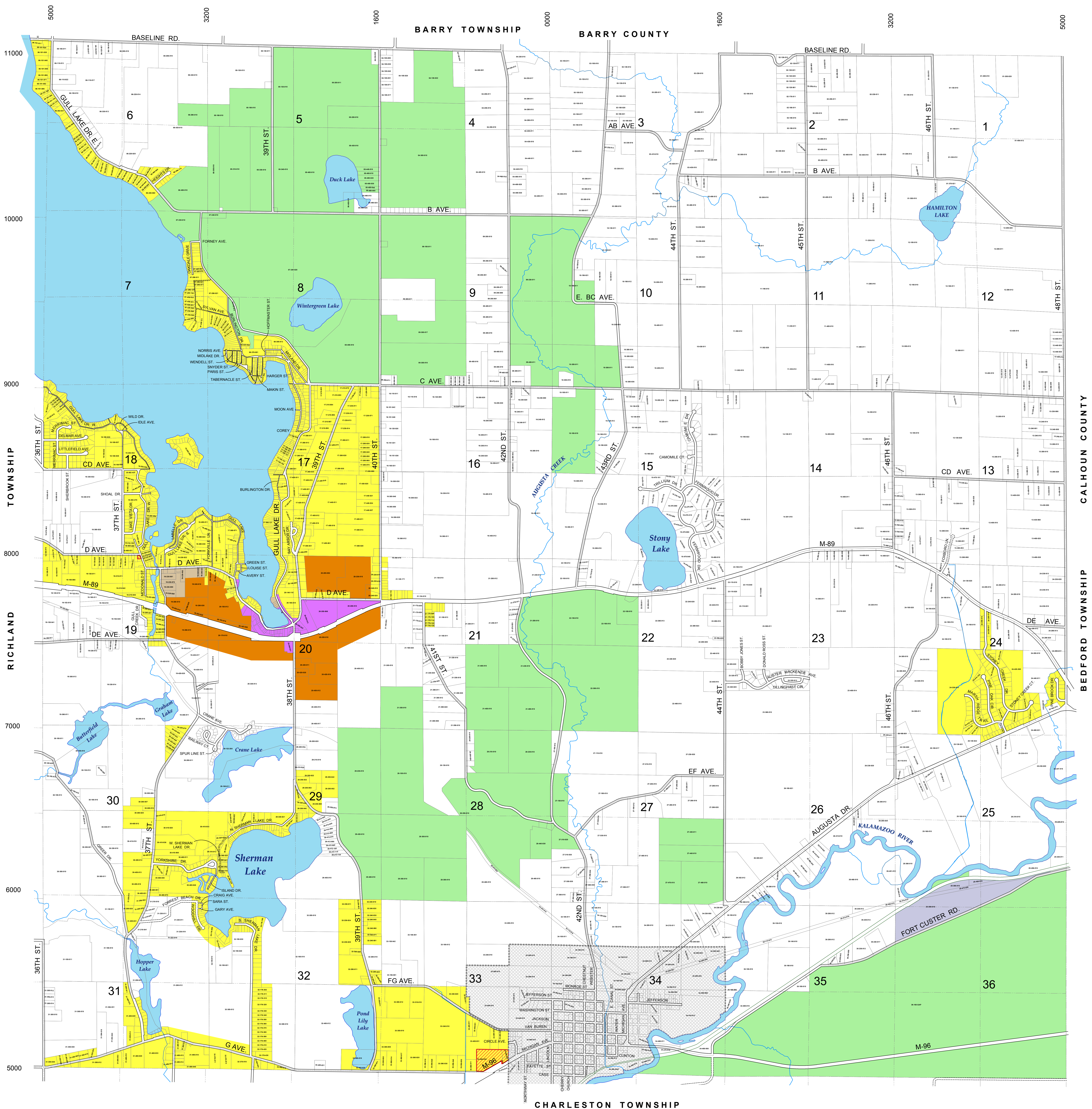


Ross Township

Kalamazoo County, Michigan

Zoning Map



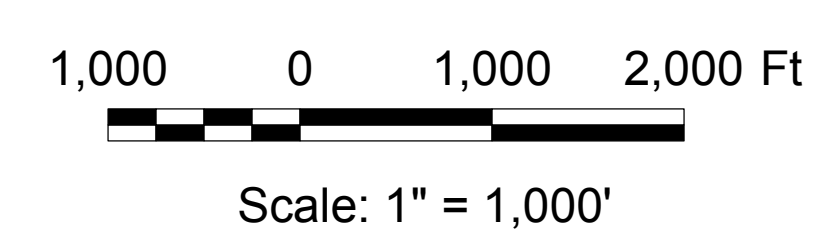
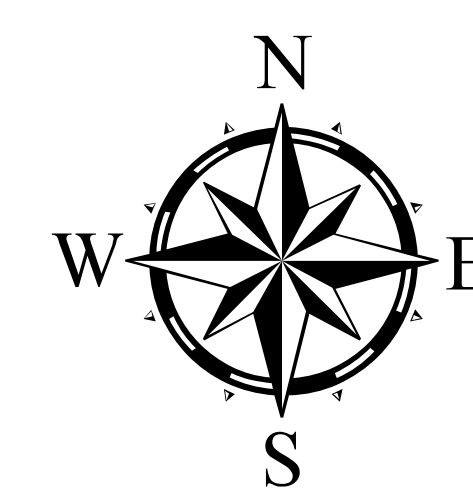
LEGEND

- AG Agricultural Preservation District
- R-R Rural Residential District
- R-1 Low Density Residential District
- R-2 Medium Density Residential District
- R-3 High Density Residential District
- R-4 Mobile Home Park District
- C-1 Bay Commercial District
- I-R Restricted Industrial District
- C-2 Neighborhood Commercial Overlay District

Revised as to Use District Amendments

Through Ordinance Number: 196
Effective: March 27, 2015

Printed: May 7, 2015



- Public R.O.W.
- Private R.O.W.
- Railroad R.O.W.